

NORTHVILLE DISTRICT LIBRARY



Connecting you to Ideas, Information & Imagination!

Northville uses its Library



Library Use in 2009

- More than 230,000 visits last year
- Over 520,000 items borrowed last year
- Per capita 15.4 items borrowed (State Average 7.5)
- 60,522 pages viewed on Subscription Databases
- 58,633 sessions on the Library Public Computers

More than just Books

- Resources for Lifelong Education
- Expert Research Assistance
- A Place to Work and Gather Together
- Experiences that Instruct and Enlighten

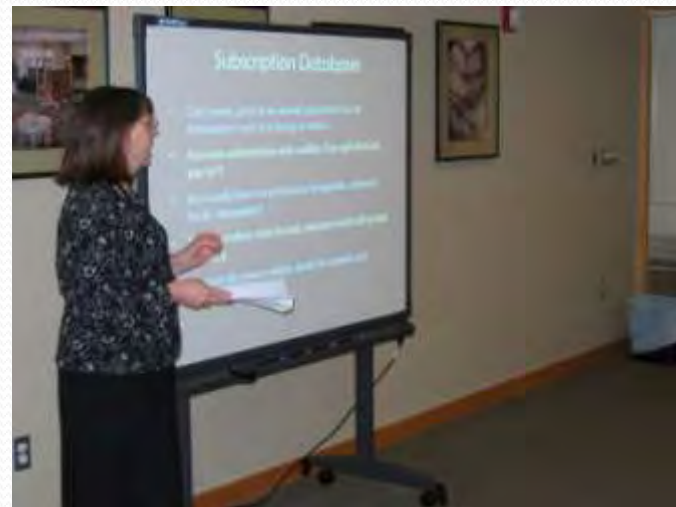
Support for K-12 Education



- Fostering reading skills and a lifelong love of reading
- Summer Reading Program rewards reading
- Subscription Databases to support curriculum
- Research skills for online content taught by librarians

Community Link to Digital World

- Public Internet and Wi-Fi
- Classes on Internet, email and online research
- How to use Ebay, Craig's List, Facebook and Twitter
- One-on-one computer tutoring



Limits to the free Internet

- Online resources for valuable, expert content
- E- Books – for research and leisure reading
- Paid for by the Library each year
 - ValueLine, Ancestry, Language Learning
- Librarians instruct and assist users

Experiences That Instruct and Enlighten

- Storytimes for Children
- Book Discussions for Adults, Teens and Children
- Foreign Film Series
- Special Events and Classes



A Place to Gather and Work Together

- Over 230,000 visitors per year
- Meeting Room used 524 times in 2009
- Group Study Rooms in constant use



We are busier than ever!

Increases Over Last 5 Years:

- Items Borrowed 91%
- Library Computer Use 86%
- WiFi Use 236%
- Adult Programs/Events Attendance 120%

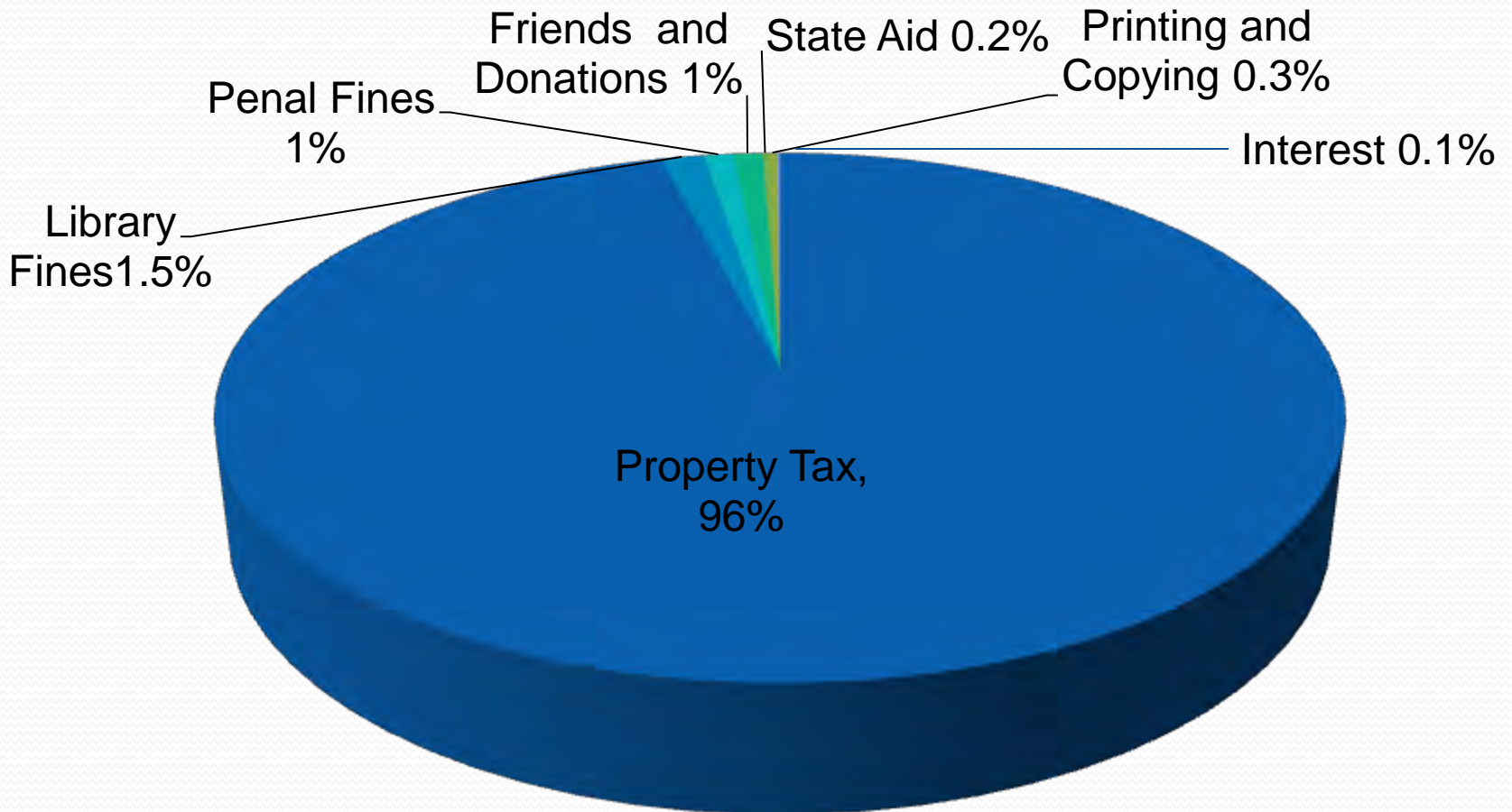
Northville Population Growth (SEMCOG Est.) 4%

We are busier than ever!

Increases Over Last 5 Years:

- Storytime Attendance 128%
- Youth Program Attendance 66%
- Database Usage 66%
- Library Visits 57%
- Website Visits 40%

Library Income 2010



The Library is a District

- District Established in 1994
- Includes City and Township Residents
- Separate financially from City and Township
- Voted 1 mill for Operating
- Voted Bond issue for Building

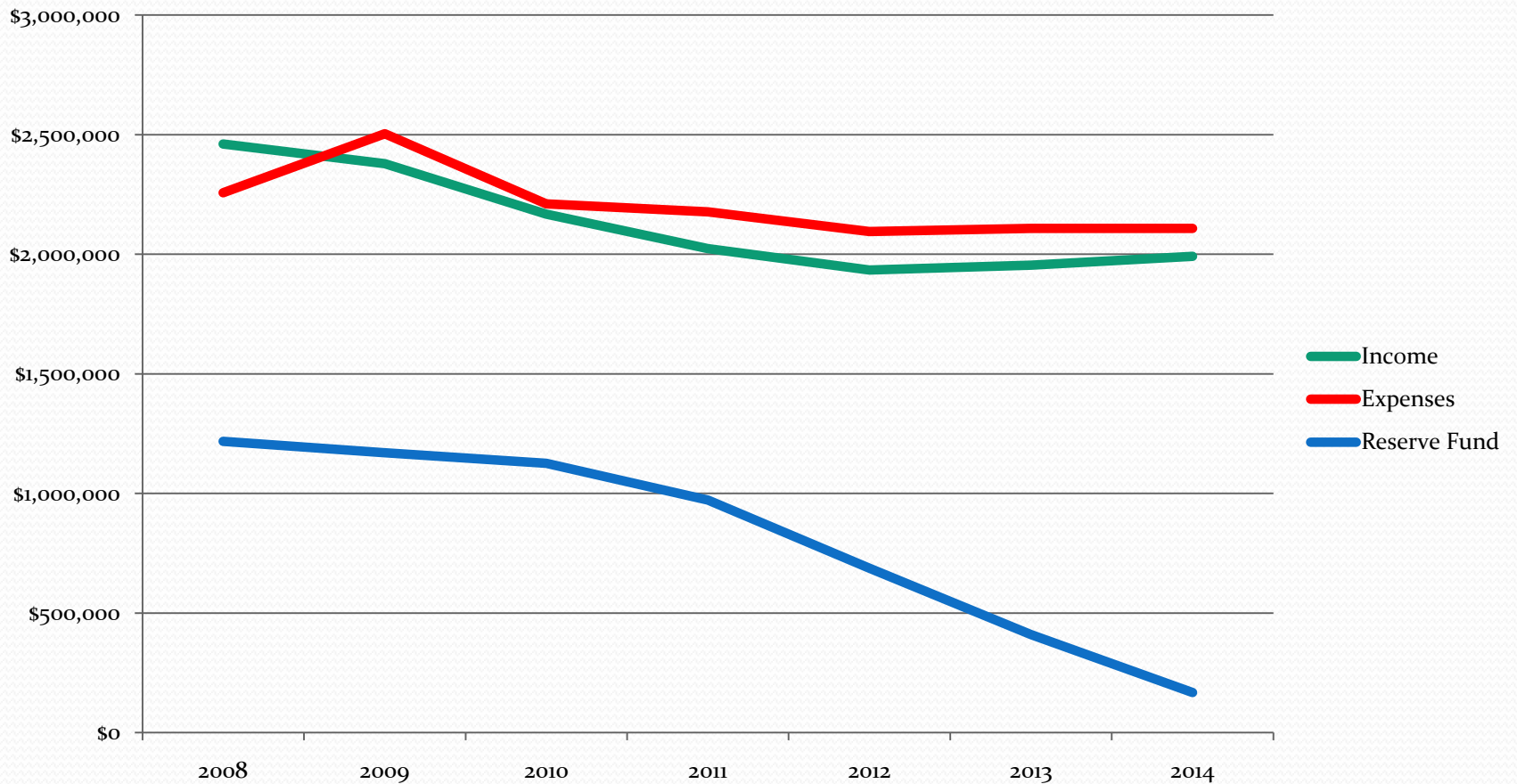
- 1 mill = \$1 per \$1,000 of Taxable Value

Property Tax Erosion

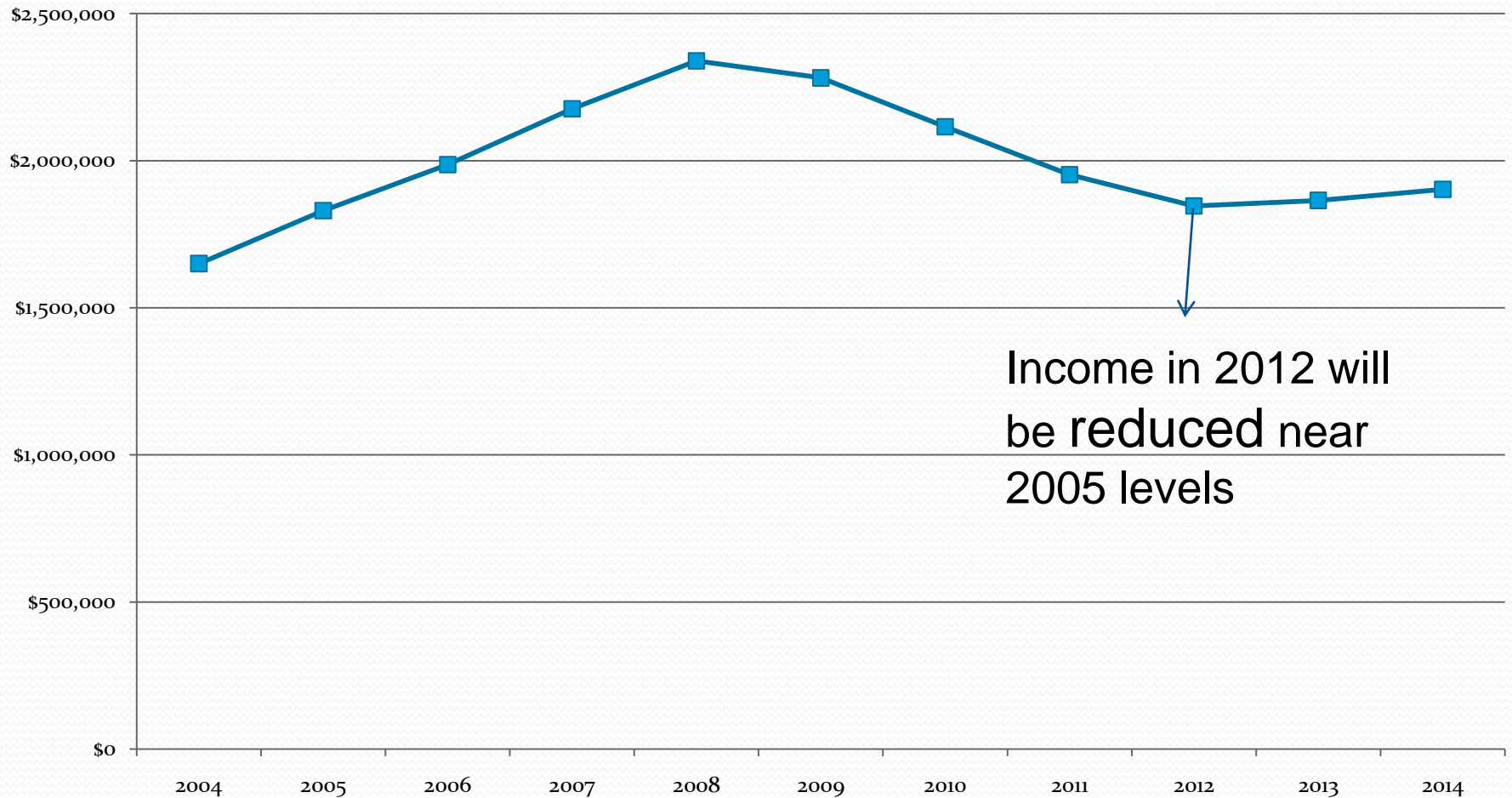
- Headlee Rollback from 1 mill to .9573
- Debt millage .1989
- Decline in property values

Michigan.gov/taxes

5 Year Income/Expense Projections



Income

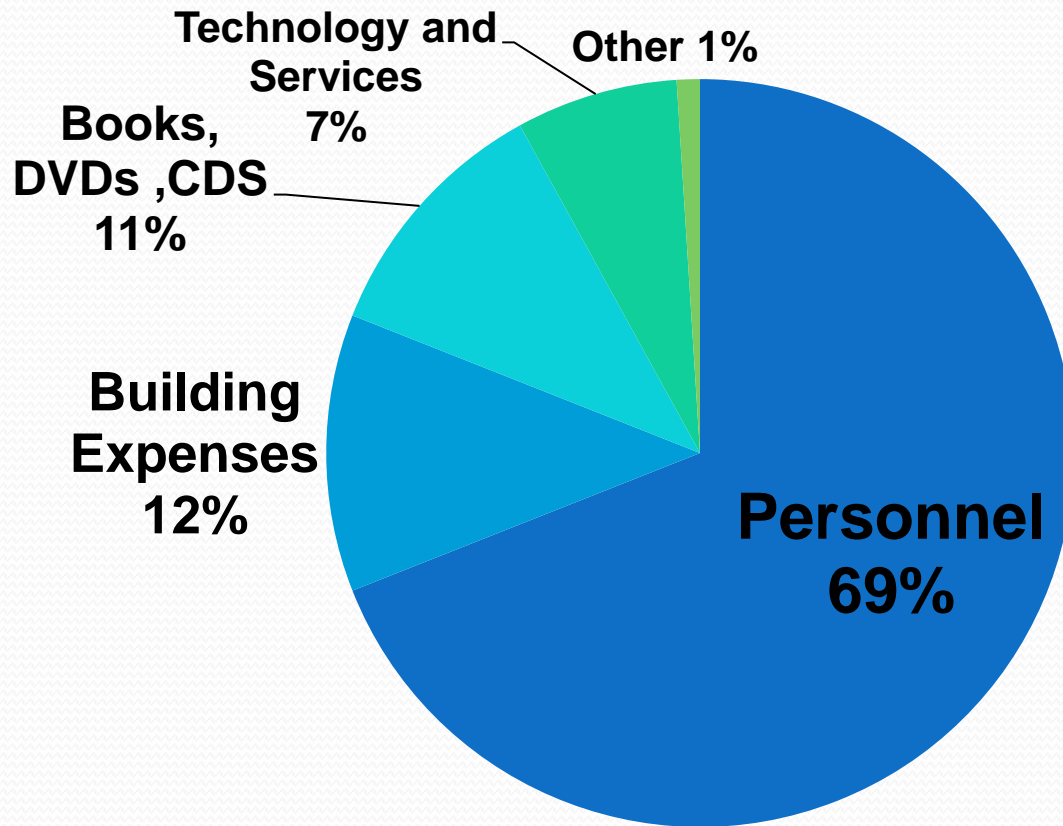


Income in 2012 will be reduced near 2005 levels

Reserve Fund

- For contingencies
 - Repair of older building (Roof, HVAC, etc.)
 - Tax Refunds over budgeted amount
- For cash flow to avoid borrowing each December
- Auditors recommend minimum 20% of expenditures

Expenses



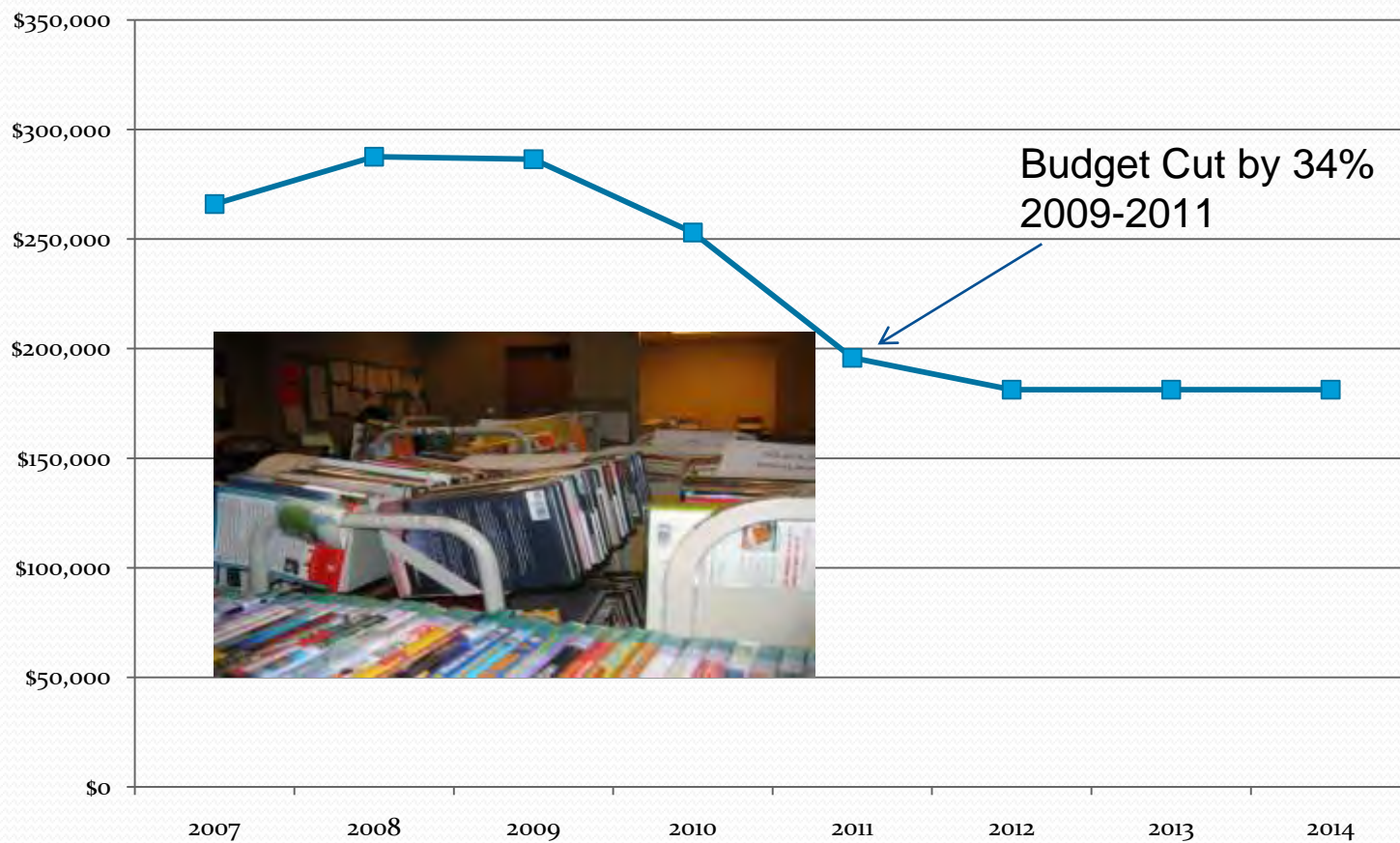
Spending Cuts so far:

- Staff Contract Agreements
 - Salaries frozen for 2 years
 - Health Care Premium Contributions
- Budget Cuts for Materials and Programs
- Cut funds for staff training and workshops

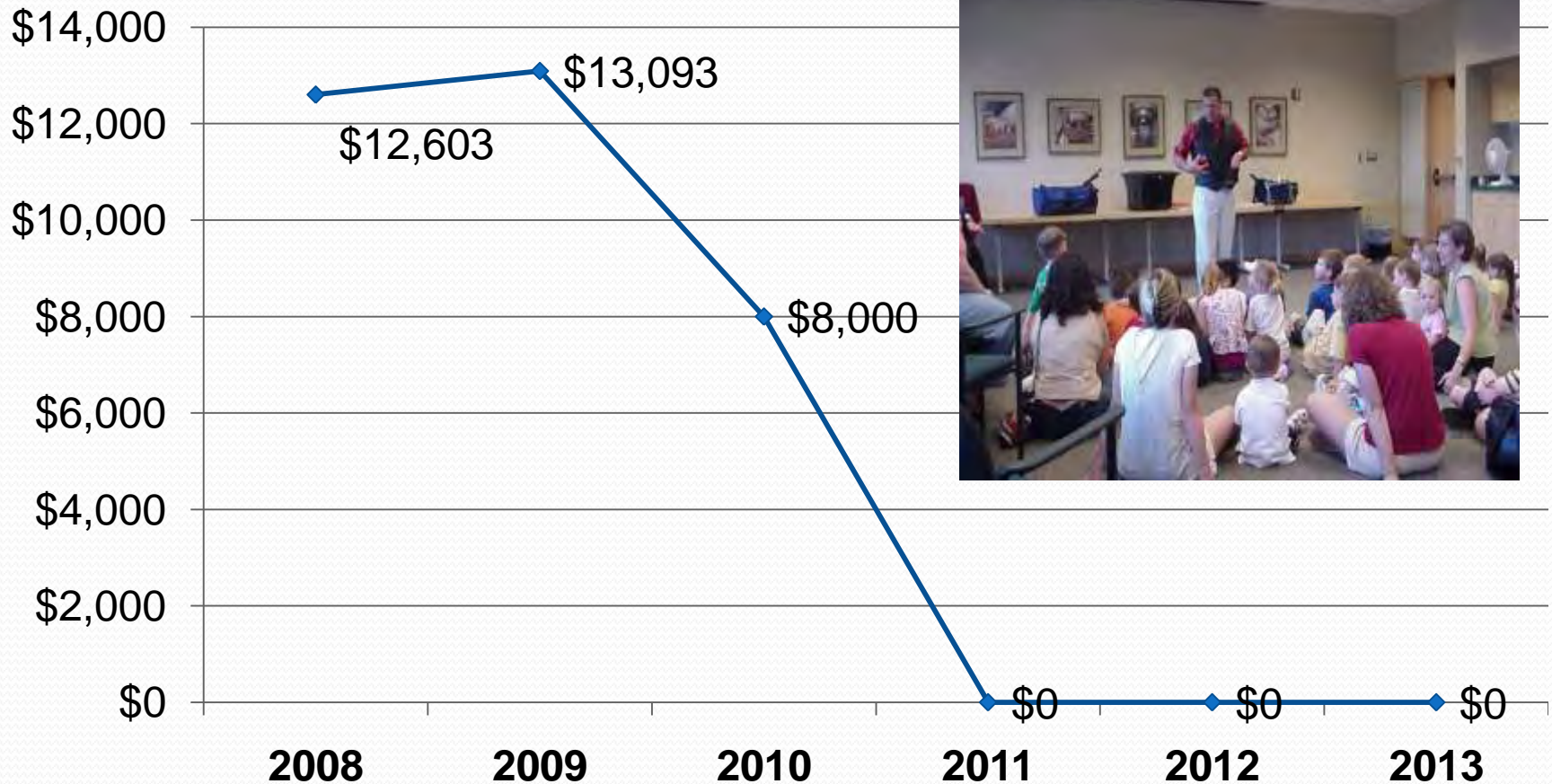
- Added Efficiencies
 - Energy efficient lighting
 - RFID system for checkout and inventory



Materials Budget



Program and Event Budget



Efforts to close the gap:

- Increased Overdue Fines and Rental Fees
- Alternative sources of income
 - Friends of the Library – Used Book Sales
 - Library Endowment Fund
- Use of Reserve Fund

More budget cuts to come?

- Reduce hours of operation
- Reduce staff
- Deeper cuts to Books, DVDs and CDs

Reduced Hours and Staff Means

- Cuts to Storytimes
- Fewer Classes
- Fewer Children's and Teen Events
- Less Adult Programming
- Rooms not available for groups to meet

Deeper Cuts to Materials Budget

- Longer waiting lists for titles
- Less choice of titles
- Fewer movies and music CDs
- Decreased funds for popular online resources

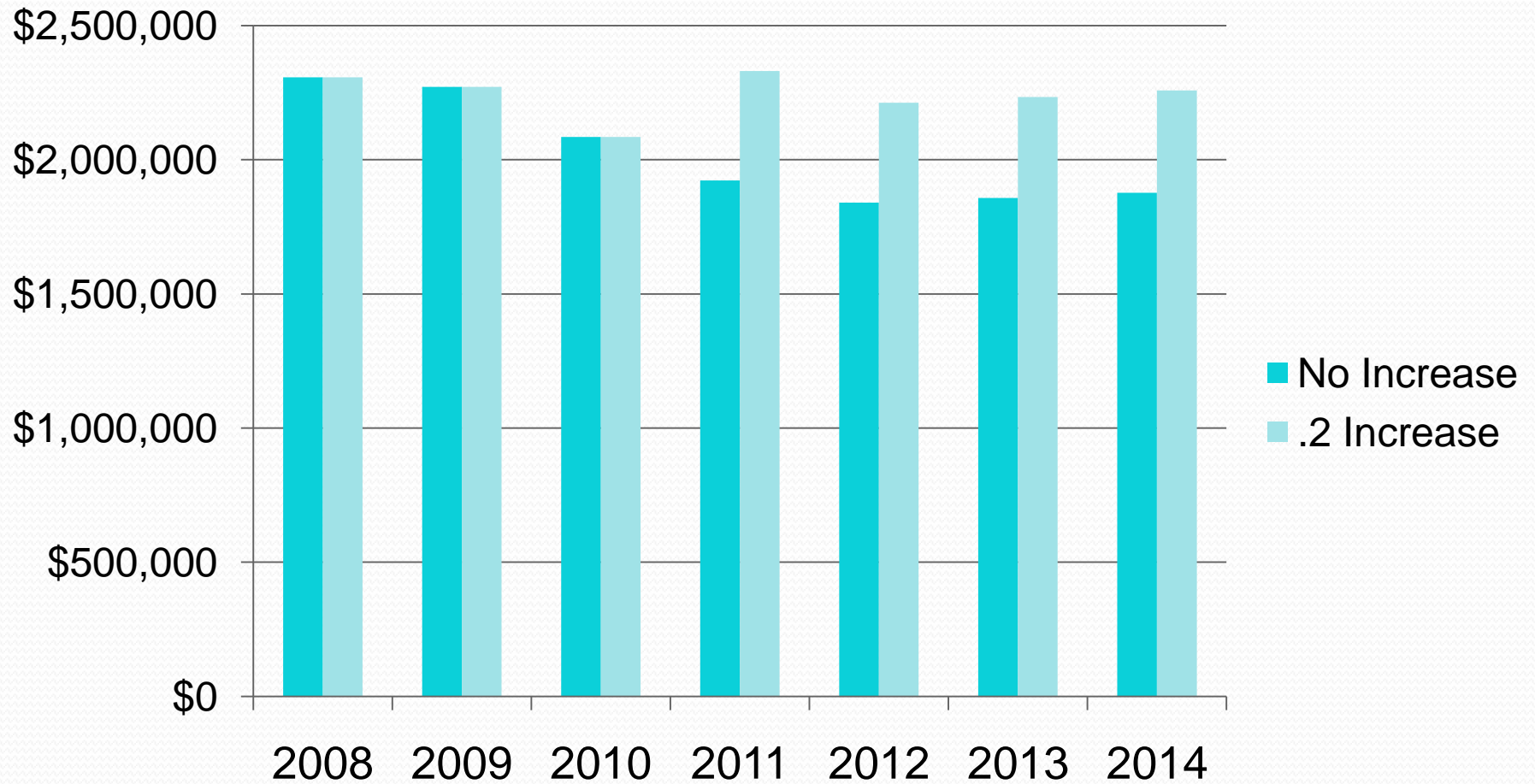
Current Library Property Tax

| Market Value | Taxable Value | Operating | Debt |
|---------------------|----------------------|------------------|-------------|
| \$200,000 | \$100,000 | \$96 | \$20 |
| \$400,000 | \$200,000 | \$191 | \$40 |
| \$600,000 | \$300,000 | \$291 | \$60 |

Operating millage - .9573

Debt millage- .1989

.2 Mill Increase



Market Value

Taxable Value

Increased Tax per Year



\$200,000



\$100,000

=

\$20



\$400,000



\$200,000

=

\$40



\$600,000



\$300,000

=

\$60

Looking to the Future

- Library contributes to quality of life
- Commitment to reading and education
- Keeping pace with digital innovations

A dynamic library is a community asset.

Support your Library!

Questions or Comments?

www.northvillelibrary.org

jherrin@northvillelibrary.org